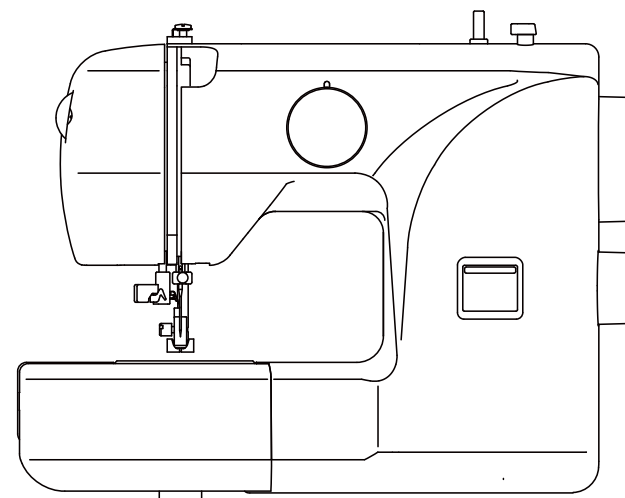
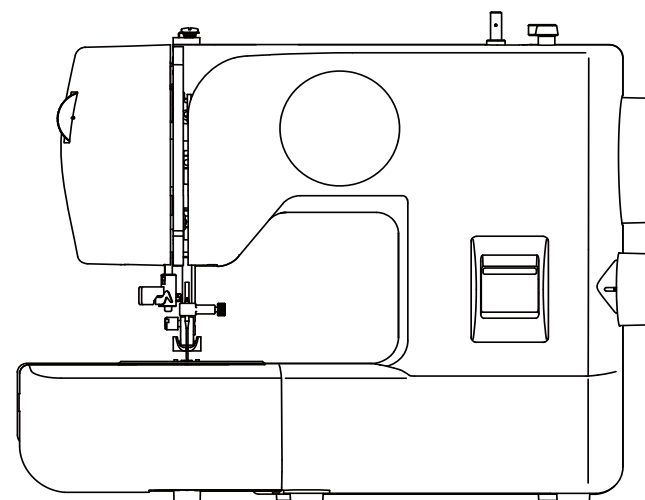


INSTRUCTION MANUAL



model. 011



model. 021

“IMPORTANT SAFETY INSTRUCTIONS”

“When using an electrical appliance, basic safety precautions should always be followed, including the following.”

“Read all instructions before using this sewing machine.”

“DANGER— To reduce the risk of electric shock:”

1. “This sewing machine should never be left unattended when plugged in. Always unplug this sewing machine from the electric outlet immediately after using and before cleaning.”

“WARNING— To reduce the risk of burns, fire, electric shock, or injury to persons: ”

1. “Do not allow to be used as a toy. Close attention is necessary when this sewing machine is used by or near children.”
2. “This appliance is not intended for use by persons (including children) with reduced physical, sensory or mental capabilities, or lack of experience and knowledge, unless they have been given supervision or instruction concerning use of the appliance by a person responsible for their safety. Children should be supervised to ensure that they do not play with the appliance.”
3. “Use this sewing machine only for its intended use as described in this manual. Use only attachments recommended by the manufacturer as contained in this manual.”
4. “Never operate this sewing machine if it has a damaged cord or plug, if it is not working properly, if it has been dropped or damaged, or dropped into water. Return the sewing machine to the nearest authorized dealer or service center for examination, repair, electrical or mechanical adjustment.”
5. “If the supply cord is damaged, it must be replaced by the manufacturer, its service agent or similarly qualified persons in order to avoid a hazard.”
6. “Never operate the sewing machine with any air openings blocked. Keep ventilation openings of the sewing machine and foot control free from the accumulation of lint, dust, and loose cloth.”
7. “Never drop or insert any object into any opening.”
8. “Indoors use only.”
9. “Do not operate where aerosol (spray) products are being used or where oxygen is being administered.”
10. “To disconnect, turn switch to the off („0”) position, then remove plug from outlet.”
11. “Switch off or unplug the appliance when leaving it unattended, unplug the appliance before carrying out maintenance or replacing lamps.”
12. “Do not unplug by pulling on cord. To unplug, grasp the plug, not the cord.”
13. “Keep fingers away from all moving parts. Special care is required around the sewing machine needle.”
14. “Never sew with a damaged needle plate as this can cause needle to break.”
15. “Do not use bent needles.”
16. “Do not pull or push fabric while stitching. It may deflect the needle causing it to break.”
17. “Switch the sewing machine off (“0”) when making any adjustments in the needle area, such as threading needle, changing needle, threading bobbin, or changing presser foot, etc.”
18. “Always unplug sewing machine from the electrical outlet when removing covers, lubricating, or when making any other user servicing adjustments mentioned in the instruction manual.”
19. “To avoid electrical shock never put the machine nor the mains cable or mains plug into water or other liquids.”
20. “The LED lamp maximum power is 0.3w, maximum voltage is DC 5v, if the LED lamp is damaged, you should not use the product and send it to the manufacture or service agent to repair or replace at once.”
21. “Attention the following to avoid injury:
 - Unplug the foot controller of the appliance when leaving it unattended:
 - Unplug the foot controller of the appliance before carrying out any maintenance.”

Dimensions: 35.0 cm x 16.0 cm x 27.5 cm

Mass of the equipment: 4.6 kg

Rated Voltage: 230 V

Rated Frequency: 50 Hz

Rated input: 35 W

Using ambient temperature: Normal temperature

Acoustic noise level: less than 76 db (A)

“CAUTION— Moving parts-To reduce risk of injury, switch off before servicing. Close cover before operating machine.”

“SAVE THESE INSTRUCTIONS”

“This product is for household use, or equivalent.”

This appliance complies with EEC Directive 2004/108/EC covering the electromagnetic compatibility.



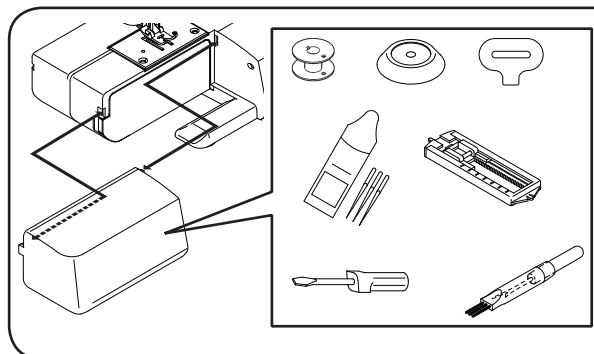
DISPOSAL:

This equipment is marked with the recycling symbol. Do not dispose this product as unsorted municipal waste. Collection of such waste separately for special treatment is necessary. (European Union only)

TABLE OF CONTENTS

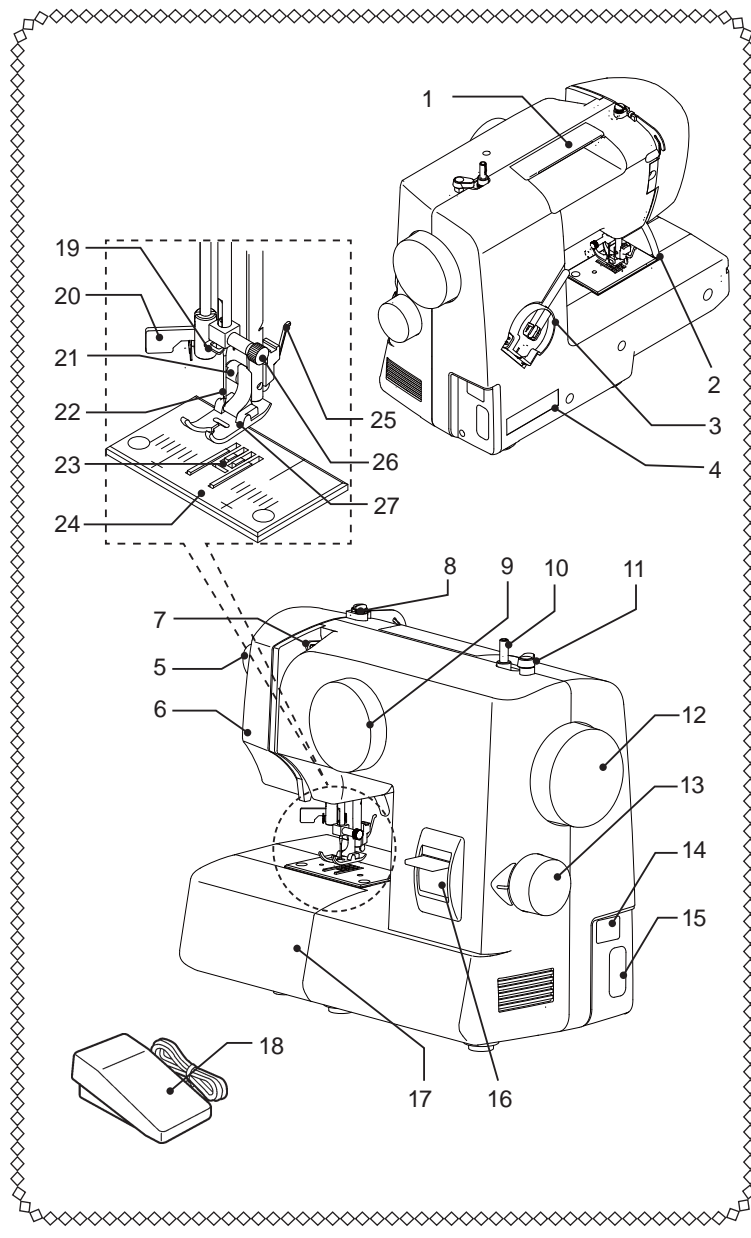
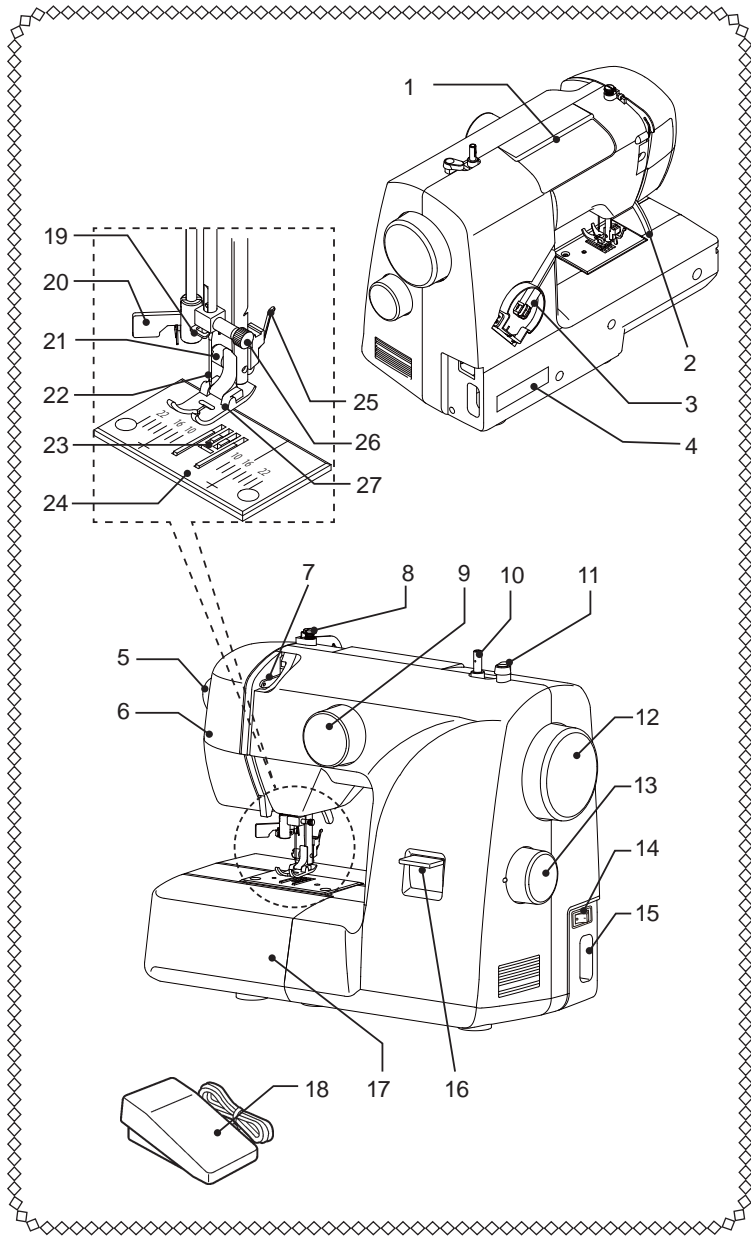
"IMPORTANT SAFETY INSTRUCTIONS"
ACCESSORIES

MACHINE IDENTIFICATION	3
SETTING UP YOUR MACHINE	4
REMOVING BOBBIN CASE FROM SHUTTLE.....	5
WINDING BOBBIN	5
INSERTING BOBBIN INTO BOBBIN CASE.....	5
INSERTING BOBBIN CASE INTO SHUTTLE.....	5
THREADING THE TOP THREAD.....	5
USING AUTOMATIC NEEDLE THREADER.....	5
PICKING UP BOBBIN THREAD	5
STARTING TO SEW	5
ADJUSTING STRAIGHT STITCH THREAD TENSION	6
ADJUSTING BOBBIN THREAD TENSION	6
NEEDLE, THREAD AND FABRIC CHART	6
CHANGING THE NEEDLE.....	6
BLIND STITCH	6
CHANGING PRESSER FEET	6
BUTTONHOLE MAKING	6
BUTTONHOLES	7
CORDED BUTTONHOLES	7
ADJUSTING STITCH LENGTH.....	7
CLEANING THE FEED DOGS AND SHUTTLE AREA	7

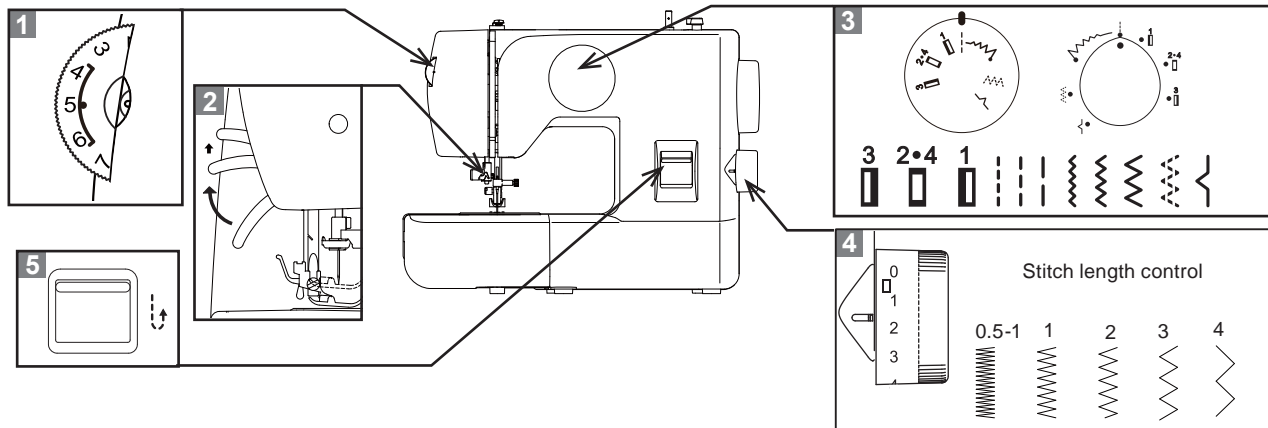


ACCESSORIES

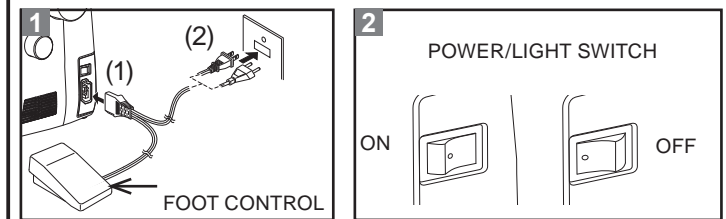
Remove the extension table by pulling it to the left. Open the accessory box and you will find a variety of accessories inside.



MACHINE IDENTIFICATION	
1	Handle
2	Presser foot lever
3	Spool pin
4	Identification plate
5	Thread tension control
6	Face cover
7	Thread take-up
8	Bobbin winder tension disc
9	Stitch selector
10	Bobbin winder shaft
11	Bobbin winder stop
12	Hand wheel
13	Stitch length control
14	Power/light switch
15	Plug socket
16	Reverse stitch lever
17	Extension table
18	Foot control
19	Thread guide
20	Automatic needle threader
21	Presser foot screw
22	Needle
23	Feed dogs
24	Needle plate
25	Foot release lever
26	Needle clamp screw
27	Presser foot



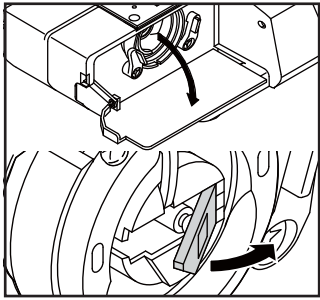
- 1 TOP THREAD TENSION CONTROL**
Decrease or increase the tension of the top thread by using this dial. The higher the number, the tighter the tension.
- 2 PRESSER FOOT LEVER**
There are three positions for your presser foot.
- 3 STITCH SELECTOR**
To select a stitch, be sure needle is out of fabric at its highest position.
- 4 STITCH LENGTH CONTROL**
Stitch length can be selected easily according to thickness and type of fabric.
- 5 REVERSE STITCH LEVER**
It is recommended to begin and end seams with several stitches in reverse for reinforcement. As long as you are pressing down this lever while sewing, the machine will continue to feed the fabric backwards.



When servicing the machine, or changing needles or lamps, etc., machine must be disconnected from the wall outlet.

SETTING UP YOUR MACHINE

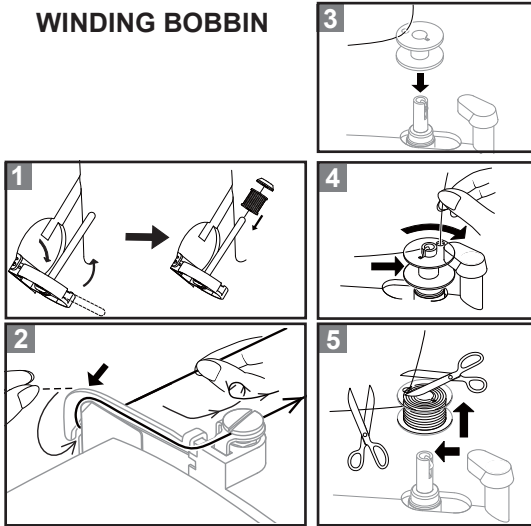
- 1 FOOT CONTROL**
Connect the plug of the foot control into the machine socket (1) and your wall outlet (2) as illustrated.
- 2 POWER/LIGHT SWITCH**
Your machine will not operate until the power/light switch is turned on. The same switch controls both the power and the light.



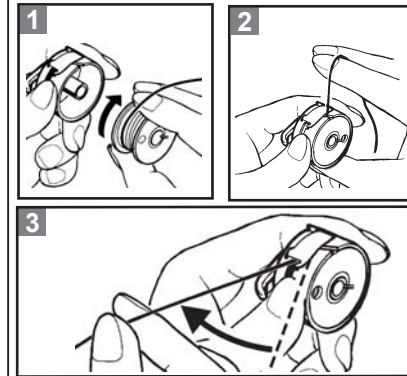
REMOVING BOBBIN CASE FROM SHUTTLE

Open the bobbin access cover by pulling it down. With your fingers, pull open the bobbin case latch as shown, and take out the bobbin case from the shuttle.

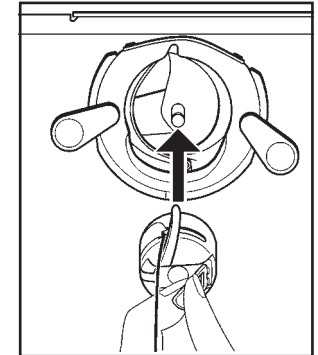
WINDING BOBBIN



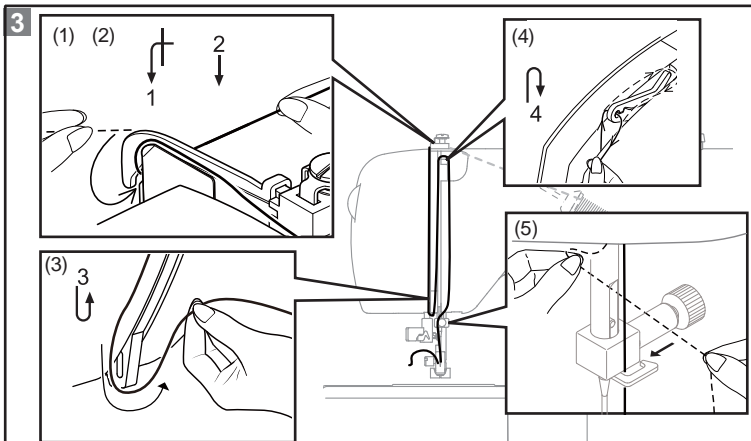
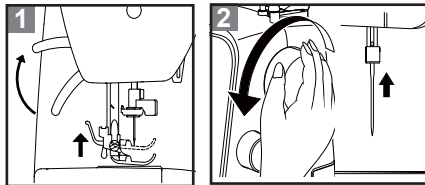
INSERTING BOBBIN INTO BOBBIN CASE



INSERTING BOBBIN CASE INTO SHUTTLE

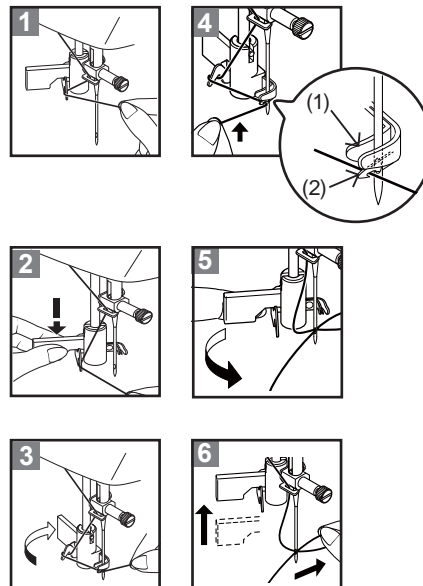


THREADING THE TOP THREAD

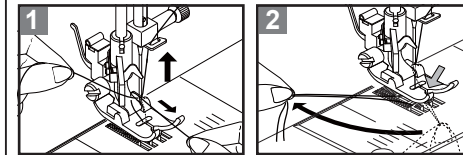


Thread the machine in the following order as illustrated.

USING AUTOMATIC NEEDLE THREAD

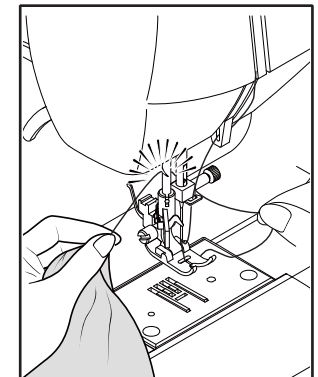
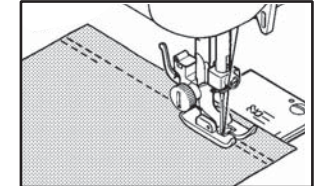


PICKING UP BOBBIN THREAD

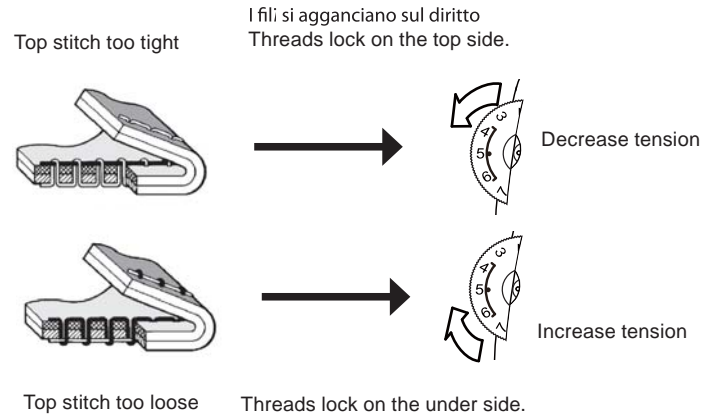
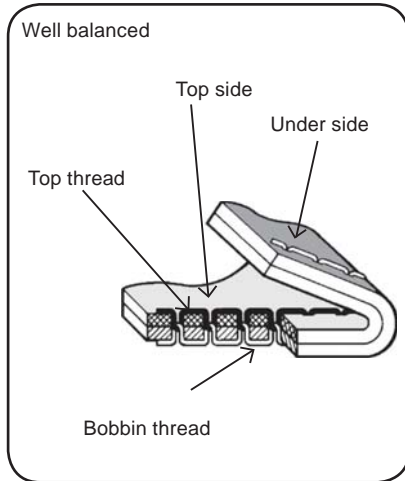


Rotate hand wheel forward, bobbin thread goes up with upper thread. Draw both threads backward.

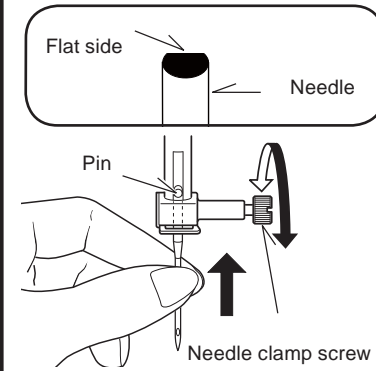
STATING TO SEW



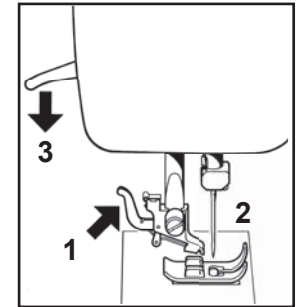
ADJUSTING STRAIGHT STITCH THREAD TENSION



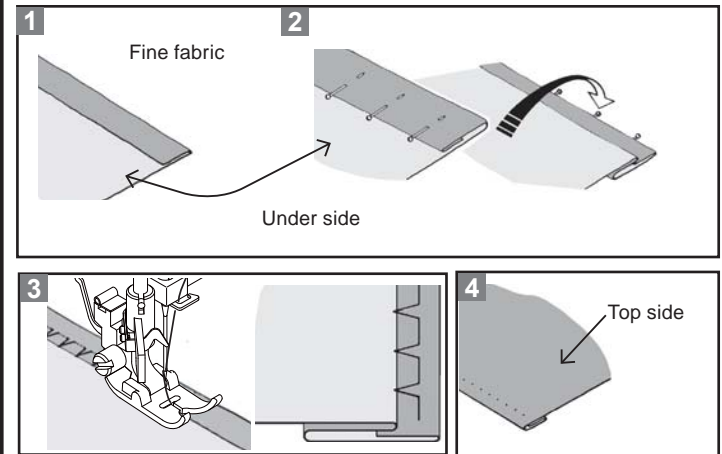
CHANGING THE NEEDLE



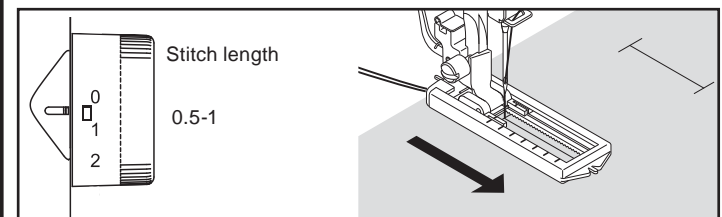
CHANGING PRESSER FEET



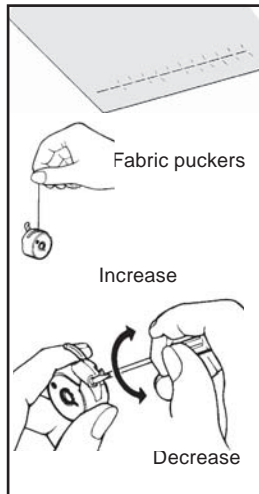
BLIND STITCH



BUTTONHOLE MAKING



ADJUSTING BOBBIN THREAD TENSION

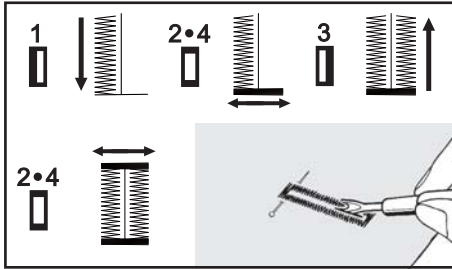


To test if the bobbin thread tension is correct, suspend the bobbin case by the thread and jerk it once. Correct bobbin tension will result in the thread unwinding only one inch or two. If too loose it will unwind continuously. If too tight the thread will not unwind at all. When adjusting the tension on the bobbin case, make only slight adjustments with a screwdriver.

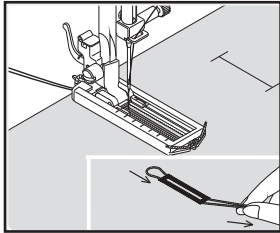
NEEDLE, THREAD AND FABRIC CHART

Size	For Thread or Fabric
No.14 (90)	Standard
No.16 (100)	Heavy
No.11 (80)	Light
No. 9 (70)	Very light

BUTTONHOLES

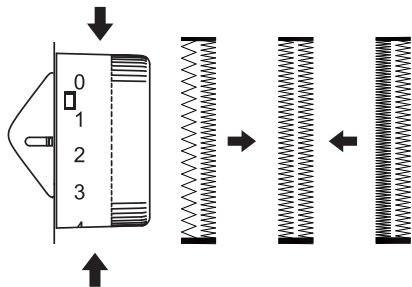


CORDED BUTTONHOLES



ADJUSTING STITCH LENGTH

More density



Less density

When servicing the machine, or changing needles or lamps, etc., machine must be disconnected from the wall outlet.

CLEANING THE FEED DOGS AND SHUTTLE AREA

1. Raise the needle to its highest position.
2. Remove the bobbin case from the shuttle.
3. Push aside the two shuttle race cover and shuttle.
4. Remove the shuttle race cover and shuttle.
5. Clean the feed dogs and shuttle area with the lint brush.

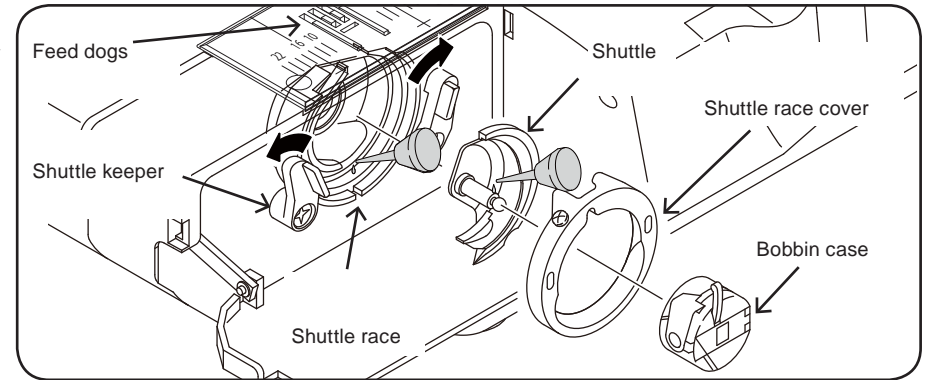
NOTE: Put a drop of sewing machine oil on the center pin of the shuttle and shuttle race as indicated by the arrows.

6. Be sure the shuttle race forms a half moon on the left side of the machine.
7. Holding the shuttle by its center pin, replace it so as to form a half moon on the right side.
8. Slide the shuttle race cover back into position.
9. Snap the shuttle keepers back into position.

Cleaning the sewing machine and foot controller

After using, keep sewing machine and foot controller clean. Use dry rags to remove dust from the sewing machine and foot controller.

NOTE: Use dry rags to avoid electrical shock.





19742-D01-10657

11/17

5/18(1)

ENGLISH